



## PAS29C Clip-on Thermal Imager





Low light



Outline



Hight light

### **Description :**

To make up for the limited performance of the low light level and low illumination night vision devices under the extreme environment.

PAS29C is a thermal imaging enhancement attachment designed for the rapid upgrade, front-fusion, and multi-mode display of equipment in service. It can enhance the user's night perception ability to ensure the absolute tactical advantages to priorly identify the potential enemies.

### **Feature :**

Light weight & fast mounting

Excellent image clarity matched Image Intensifier systems

Multi-mode display

Multi-type external battery

Brightness Adjustment

Shutter Correction

Contrast Adjustment

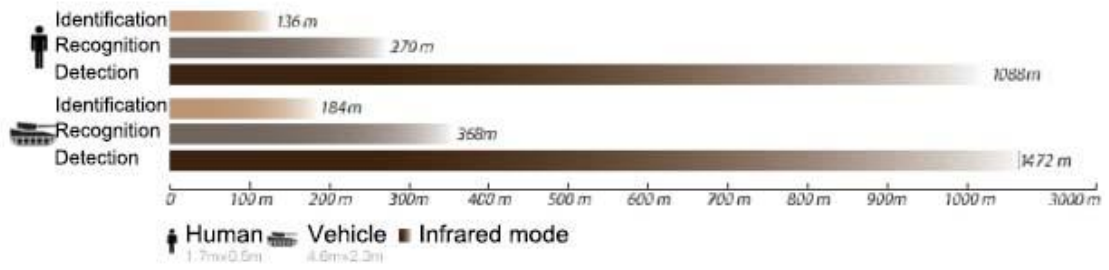
Threshold Adjustment

Menu rollover, rear battery pack

## Specification :

		Infrared	
<b>Resolution</b>	640×512	384X288	
<b>Pixel</b>	12μm		
<b>Spectral range</b>	8~14μm		
		Optical	
<b>Focal length</b>	f 11.52		
<b>FOV</b>	φ30.5°	Φ17°	
Function			
<b>Display mode</b>	White hot \ Highlight \ Outline		
<b>Display function</b>	Normally \ Breathing		
<b>Bright adjustment</b>	YES		
<b>Auto brightness</b>	YES		
<b>Shutter correction</b>	YES		
<b>Contrast adjustment</b>	YES		
<b>Threshold adjustment</b>	YES		
<b>Menu rollover</b>	YES		
<b>Language</b>	English		
Interface			
<b>Data</b>	RS232		
<b>Video</b>	PAL		
<b>Power supply</b>	External battery (3-5.5V)		
		Environmental	
<b>Operating temperature</b>	-40°C ~ +60°C		
<b>Protection level</b>	IP67		
<b>weight</b>	78g		

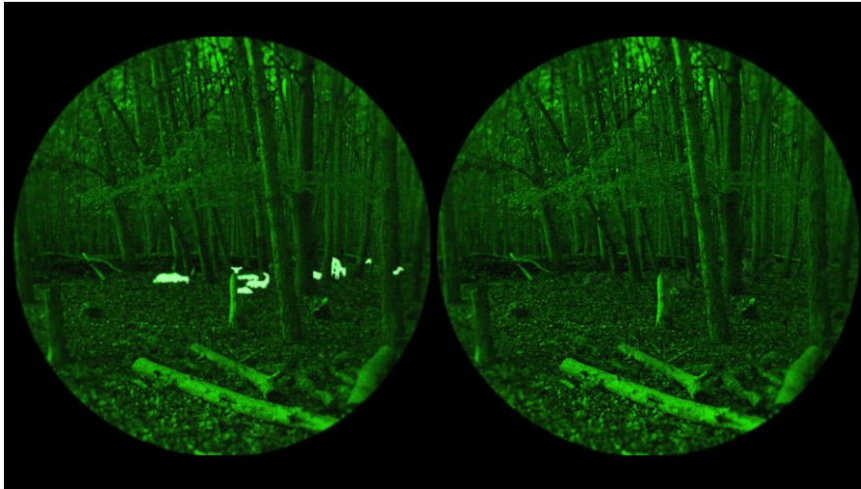
## Distance :



## Rear battery pack:



## Fusion mode



## Outline



## Thermal

